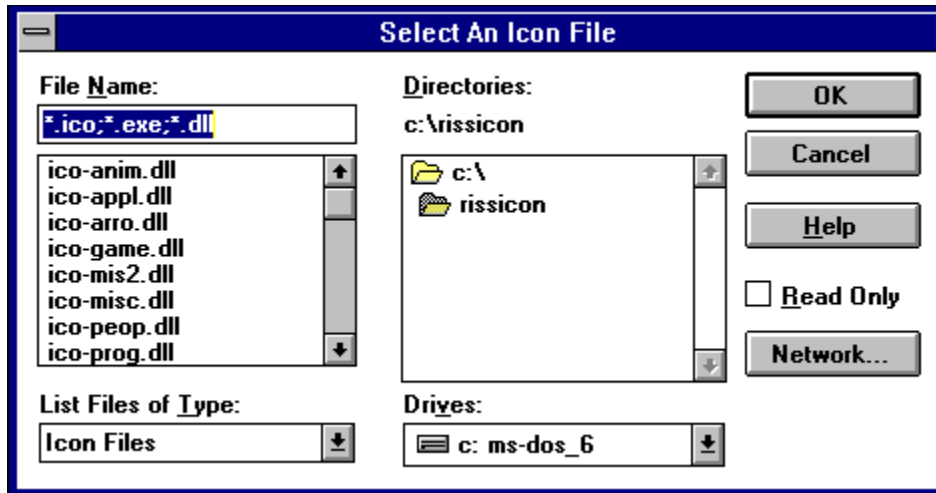


Rhode Island Soft Systems

Contents

[How to access icons](#)

[How to order](#)



How to access icons:

Select Load from the File menu to load a file containing the icons of your choice.

The above dialog box will appear. The list box in the center can be used to select the directory to search. A list of valid icon files will appear in the list box on the left. The icons in the RISS Icon Pak are bundled into .DLL files -- each .DLL file contains many icons.

Select the appropriate directory and file name, and click on the OK button.

How to change icons

This feature is available only in the RISS Icon Selector. The Russ Icon Viewer does not contain this option.

After opening a file, you may double-click on an icon , or select "Set program icon..." from the File menu to access the "Change icon" dialog box.

This box contains two list boxes. The first list box, labeled Group, contains the names of your program groups. The second list box, labeled Icons, lists the program names in each group.

The window at the bottom left of this dialog box contains a picture of the current icon selected from the currently open file. The window at the bottom right of this dialog box contains a picture of the current icon selected for the application indicated by the selected Group and Icon names in the above list boxes.

You can select an Icon and Group to view the current icon, then click on the "Change" button to change that icon to the currently selected Icon from the icon file.

Rhode Island Soft Systems

How to register

You can register your RISS Icon Pak by printing the order form included in your documentation. Fill out the order form and mail it to the address provided.

For faster service, we have a toll free order line for credit card orders. We accept Master Card, Visa, American Express, and Discover.

Our toll free order line is 1-(800)-959-7477.

